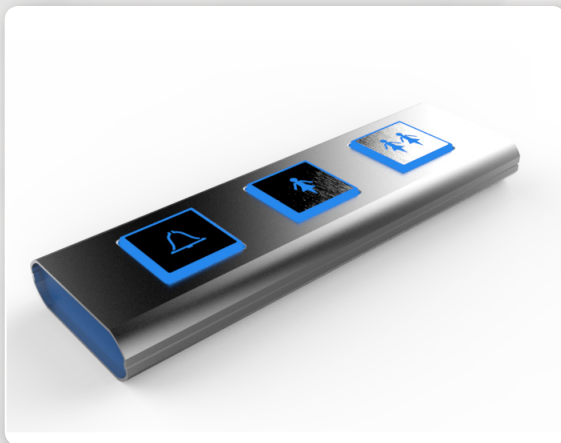
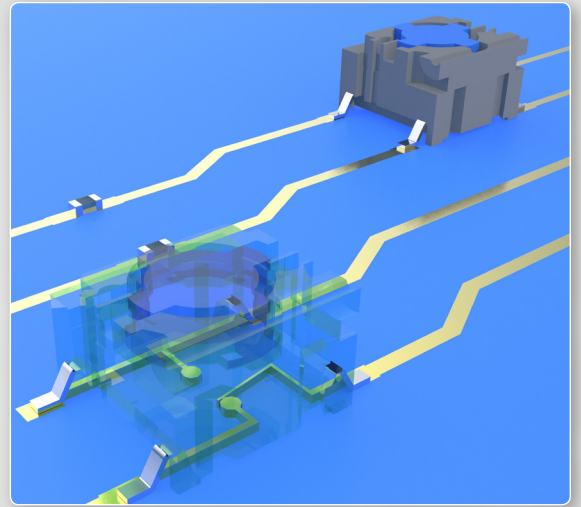


Normally closed/normally open (NC/NO) function to the Multimec® 5 series switches means that contact is established when not activated. When the switch is activated it breaks the contact and makes a new contact.

The switch has three functions:

- NC (makes)
- NO (breaks)
- NC/NO (switch over, also known as SPDT - single pole double throw).



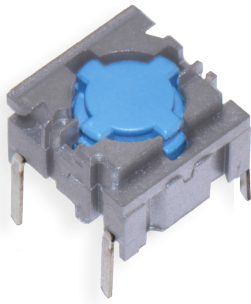
Application - NURSE CALL SYSTEM

The advantage of using the NC/NO function switch is that the system all the time "knows" that the connection to the nurse call system is still in place and working.

Application - PUSH-TO-TALK HEADSET

NC/NO function switch simplifies the change between a speaker (headset) and microphone unit. The headset is working when switch is not activated and when pressing the switch, one breaks the signal and the microphone turns on.



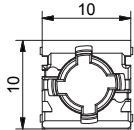
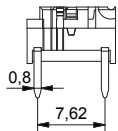
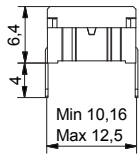


- Through-hole (TH) or surface mount (SMD)
- 50mA/24VDC
- Single pole/momentary
- 1,000,000 operations lifetime
- Temperature range: -40/+160°C
- IP 67 sealing
- Actuation force: 2.0N, 3.5N, 6.5N
- Available for 5E and non-illuminated 5G in all standard actuation forces.
- Has the same PCB layout as the NO 5E and 5G
- The housing of a NC/NO function switch is grey

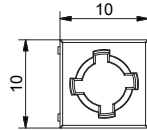
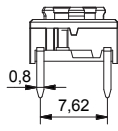
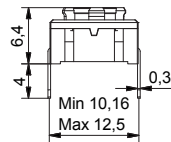
All dimensions in mm

THROUGH-HOLE (TH)

5G

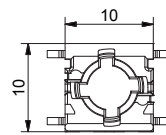
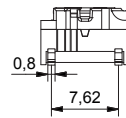
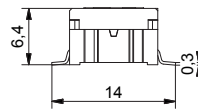


5E

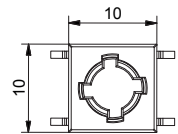
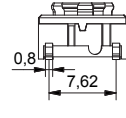
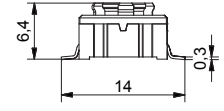


SURFACE MOUNT (SMD)

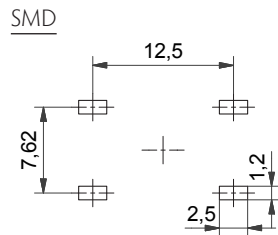
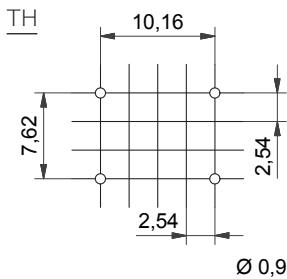
5G



5E

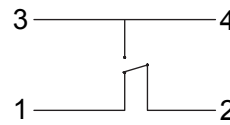


PCB LAYOUT

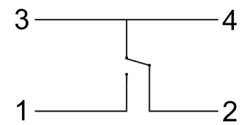


CIRCUIT DIAGRAM

non-activated



activated



HOW TO ORDER

Switch

5 E

5 G

Mounting



TH9 through-hole
SH9 surface mount

Actuation force



20
35
65

Function



NCNO normally closed/normally open

NOT FOR SALE IN JAPAN